

Imagine the possibilities...



EXTEND YOUR OUTDOOR LIVING



Go **BIG** with our innovative porch windows

What's on your porch?

Traditional Options



Open Porch

- Use dependent on temperature, precipitation & wind
- Subject to annoying pests
- Offers no privacy or security
- Constant cleaning maintenance



Screen Porch

- Use dependent on temperature, precipitation & wind
- Outside elements entering space (i.e. allergens, insects, dust, etc.)
- Cleaning difficulties
- View obstructions
- Size limitations



Storm Window Porch

- Limited sizes cause view obstructions
- Spring cleaning requires glass removal
- Continuous repairs on glass & screen panels
- Permanent 1/2 screen hampers view
- Difficult to ventilate easily
- Minimal connection to the outdoors



Vinyl Window Porch

- Vertical and horizontal sight line obstructions
- Limited sizes available
- Cumbersome to clean window sashes; requires full removal
- Difficult to operate and ventilate easily
- Vinyl 10-mil track frame
- No DP rating
- Wind Load rated at 65 mph
- Constant screen maintenance

Current Market Statistics

“Sunrooms and patio enclosures are surging in popularity. In fact, requests for professional sunroom and patio services are **up 26** percent year over year, according to HomeAdvisor.”

By Marianne Cusato, HomeAdvisor's Housing Expert and Professor of the Practice at the University of Notre Dame School of Architecture, June 9, 2016

“Out of the 780,000 new single family homes started in 2016, 65.1 percent included porches.”

According to NAHB tabulation of data from the Survey of Construction. The SOC is conducted on an ongoing basis by the U.S. Census Bureau with partial funding from the DHUB. 2016 Survey of Construction, NAHB Estimates

Presence of Outdoor Features in Detached New Single-Family Houses Sold

Porch or patio feature by census region

- 71%** West
- 86%** South
- 53%** Midwest
- 58%** Northeast

2016 Survey of Construction, NAHB Estimates



A better solution.

Cozy up to the outdoors with our porch windows



Retractable Screen Sizes & Colors

Standard rough opening sizes (white only)

- 44-1/2" x 72" 44-1/2" x 84"
- 56-1/2" x 72" 56-1/2" x 84"
- 68-1/2" x 72" 68-1/2" x 84"

Custom size range (rough opening)

- Widths from 24" to 72"
- Heights from 30" to 96"

Fixed Glass Porch Window Sizes & Colors

- Ideal for transoms, knee walls, sidelites, and filler sections.
- Triangle, trapezoid and specialty shapes available.

Standard rough opening sizes (white only)

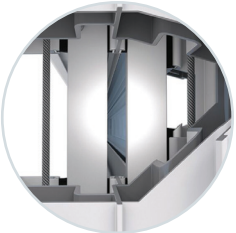
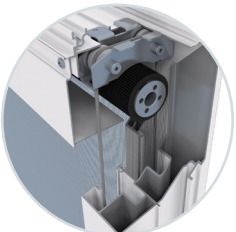
- 44 1/2" X 19 1/2"
- 56 1/2" X 19 1/2"
- 68 1/2" X 19 1/2"

Custom rough opening size range

- Widths 12" to 72"
- Heights 12" to 96"
- Maximum size is 20 sq ft

Scenix Porch

- Extends your porch to three seasons of enjoyment.
- Top and bottom retractable screens make it easy to capture natural air.
- Standard fiberglass screen and tempered safety glass included. Additional screen and glass upgrades are available for even better protection against insects and solar heat.
- Custom Sizes up to 6' wide and 8' tall
- Stainless steel aircraft cable supports the counterbalanced sashes for easy ventilation.
- Sash lock for secure closed positioning.
- Easy to install & maintenance free.
- Structural performance certified up to DP40 (Design Pressure) for retractable screen, or DP90 for fixed glass panels, through the Keystone Fenestration Certification Program.
- 3" Aluminum Frame warranted for 10 yrs.
- Retractable Screens both standard and 4in1 warranted for 5 yrs.
- Operable Glass sash warranted for 1 yr.



Go **BIG** with our innovative porch windows